

Anal Cancer Staging Consensus

General information

1. Case number

Group A (CT and PET/CT)

Group B (CT and MRI)

Please enter case number

2. Which modality was used for staging (select all that apply)?

CT

MRI

PET/CT

Anal Cancer Staging Consensus

T stage

3. Was the primary tumour visualised?

- yes
- no

4. What is the maximum primary tumour size (cm)?

- Unable to measure
- Size entered below

Tumour size (in cm)

5. Please select the T stage

- Tx (tumour cannot be assessed)
- T0 (no evidence of primary tumour)
- T1 (tumour ≤ 2 cm)
- T2 (tumour > 2 cm and ≤ 5 cm)
- T3 (tumour > 5 cm)
- T4 (invades into adjacent organs)

N stage

6. Are there any Involved nodes visualised?

yes

no

Anal Cancer Staging Consensus

Internal iliac nodes

7. Are there internal iliac lymph nodes involved?

yes

no

8. Which internal iliac nodes are involved (please specify number)?

anterior (anterior to
internal iliac artery) LEFT

anterior (anterior to
internal iliac artery) RIGHT

lateral sacral (associated
with lateral sacral artery)
LEFT

lateral sacral (associated
with lateral sacral artery)
RIGHT

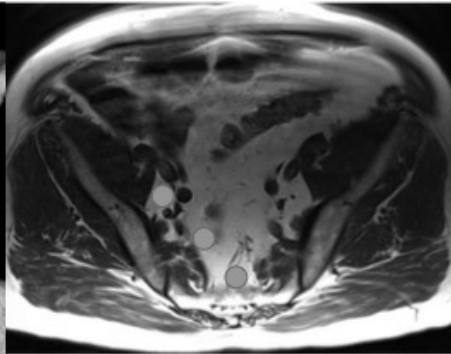
pre-sacral (associated with
anterior sacral artery)
LEFT

pre-sacral (associated with
anterior sacral artery)
RIGHT

unspecified LEFT

unspecified RIGHT

Pelvic Nodes: Internal Iliac



| | | |
|------------------|----------------|-----------------|
| ○ Perirectal | ● Inguinal | Regional |
| ● Internal iliac | | |
| ● External iliac | ● Common iliac | |

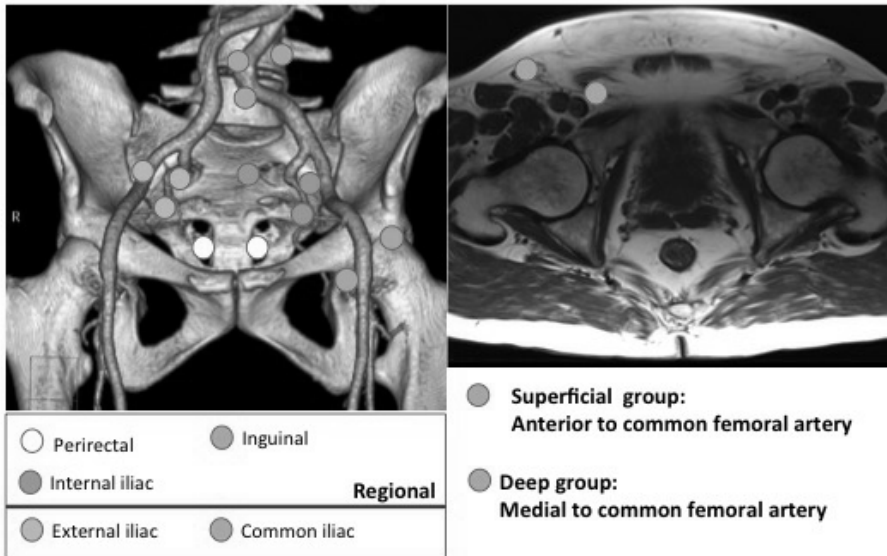
- **Anterior group:**
Anterior to internal iliac artery
- **Lateral sacral group:**
Associated with lateral sacral artery
- **Pre-sacral group:**
Associated with anterior sacral artery

Inguinal lymph nodes

9. Are there inguinal lymph nodes involved?

- yes
- no

Pelvic Nodes: Inguinal



10. Which inguinal nodes are involved (please specify number)?

Superficial AND/OR deep
LEFT

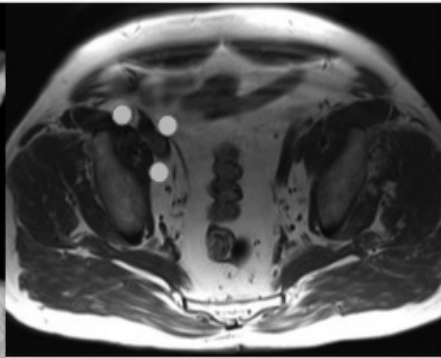
Superficial AND/OR
deep RIGHT

External iliac lymph nodes

11. Are there external iliac lymph nodes involved?

- yes
- no

Pelvic Nodes: External Iliac



- **Lateral group:**
Lateral to external iliac vessels
- **Middle group:**
Medial to external iliac vessels
- **Medial group:**
Posteromedial to external iliac vessels
includes obturator nodes

12. Which external iliac lymph nodes are involved (please specify number)?

Lateral (lateral to External
iliac artery) LEFT

Lateral (lateral to External
iliac artery) RIGHT

Medial (medial to External
iliac artery) LEFT

Medial (medial to External
iliac artery) RIGHT

Posteromedial
(posteromedial to EIA, inc
OBTURATOR) LEFT

Posteromedial
(posteromedial to EIA, inc
OBTURATOR) RIGHT

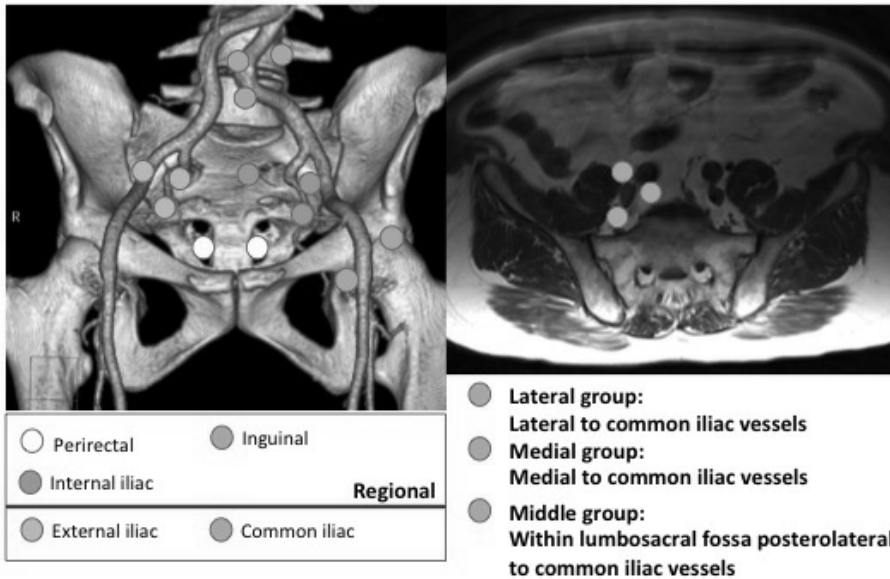
Common iliac nodes

13. Are there common iliac lymph nodes involved?

yes

no

Pelvic Nodes: Common Iliac



14. Which common iliac nodes are involved (please specify number)?

Lateral (lateral to Common Iliac artery) LEFT

Lateral (lateral to Common Iliac artery) RIGHT

Medial (medial to Common Iliac artery) LEFT

Medial (medial to Common Iliac artery) RIGHT

Posterolateral (within lumbosacral fossa) LEFT

Posterolateral (within lumbosacral fossa) RIGHT

N stage

15. Please select N stage for this case

- N0- no regional LN metastases
- Nx- regional LN cannot be assessed
- N1-metastases in perirectal LN(s)
- N2-metastases in unilateral internal iliac and/or inguinal LN(s)
- N3 - metastases in perirectal and inguinal LN and/or bilateral internal iliac LN(s) and/or inguinal LN(s)

M stage

16. Please select the M stage for this case

- M0
- M1 -based on non-regional LN
- M2-based on organ involvement

