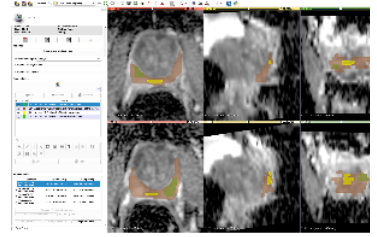




# QIN-PROSTATE-Repeatability



## Summary

This is a dataset with multiparametric prostate MRI applied in a test-retest setting, allowing to evaluate repeatability of the MRI-based measurements in the prostate. There is very limited data about the repeatability in mpMRI of the prostate, while such information is critical for establishing technical characteristics of mpMRI as imaging biomarker of prostate cancer.

Data was provided by the Brigham and Women's Hospital team. Data collection was supported by U01 CA151261 (PI Fiona Fennessy). Preparation of data for public sharing was supported by U24 CA180918 (<http://qiicr.org>) (MPI Andrey Fedorov and Ron Kikinis).

Type of cancer: Confirmed or suspected prostate cancer

Acquisition Protocol: Standard prostate mpMRI protocol implemented at Brigham and Women's Hospital was used in this study. For a given patient, we aimed to maintain similar protocol settings, and used the same scanner hardware and software configurations for both the baseline and repeat examinations, which were acquired within 2 weeks of time. All of the imaging studies were acquired at 3 Tesla magnet strength. Due to the scanner hardware upgrade in the middle of the study, 6 of the patients had baseline and repeat study performed on a GE Signa HDxt platform, software release 15.0\_M4A\_097.a, while the remaining 7 patients were scanned on a GE Discovery MR750w, software release DV24.0\_R01\_1344 (General Electric Healthcare, Milwaukee, WI). Transrectal coil within an air-filled balloon (Medrad Inc., Warrendale, PA) was used in all imaging studies. mpMRI protocol included T2-weighted, Diffusion Weighted (DW) (b-values of 0 and 1400 mm/s<sup>2</sup>) and Dynamic Contrast Enhanced (DCE) sequences. Detailed acquisition parameters are listed in Table 1 of [1]. DWI Apparent Diffusion Coefficient (ADC) and DCE subtract maps (further referred to as SUB; computed as the difference between the phase corresponding to the contrast bolus arrival and the baseline phase) were generated using the scanner software.

The imaging data is accompanied by the following types of derived data:

- manual segmentations of the total prostate gland, peripheral zone of the prostate gland, suspected tumor and normal regions (where applicable). Segmentations were done by a radiologist with the expertise in prostate MRI
- volume measurements (for axial T2w images and ADC images) and mean ADC (for ADC images) corresponding to the segmented regions.

Both segmentations and segmentation-based measurements are stored as DICOM objects (DICOM Segmentation images and DICOM Structured Reports that follow DICOM SR TID 1500). For the details about data representation and tools available to convert and visualize the data see [2].

In the future we plan to augment this dataset with the parametric maps obtained using that analysis (in DICOM), and potentially (pending IRB clearance) clinical data (demographics, PSA), pathology sampling data (biopsy Gleason score) and results of PI-RADS interpretation.

### References:

[1] Fedorov A, Vangel MG, Tempany CM, Fennessy FM. **Multiparametric Magnetic Resonance Imaging of the Prostate: Repeatability of Volume and Apparent Diffusion Coefficient Quantification.** Investigative Radiology. 52, 538–546 (2017). DOI: [10.1097/RLI.0000000000000382](https://doi.org/10.1097/RLI.0000000000000382)

[2] Fedorov, A., Schwier, M., Clunie, D., Herz, C., Pieper, S., Kikinis, R., Tempany, C. & Fennessy, F. **An annotated test-retest collection of prostate multiparametric MRI.** Scientific Data 5, 180281 (2018). DOI: [10.1038/sdata.2018.281](https://doi.org/10.1038/sdata.2018.281)


## About the NCI QIN

The mission of the QIN is to improve the role of quantitative imaging for clinical decision making in oncology by developing and validating data acquisition, analysis methods, and tools to tailor treatment for individual patients and predict or monitor the response to drug or radiation therapy. More information is available on the [Quantitative Imaging Network Collections](#) page. Interested investigators can apply to the QIN at: [Quantitative Imaging for Evaluation of Responses to Cancer Therapies \(U01\) PAR-11-150](#).

### Data Access

## Data Access

This is a **limited access** data set. To request access, please contact [help@cancerimagingarchive.net](mailto:help@cancerimagingarchive.net). Once access is granted, click the **Download** button to save a ".tcia" manifest file to your computer, which you must open with the [NBIA Data Retriever](#). Click the **Search** button to open our Data Portal, where you can browse the data collection and/or download a subset of its contents.

Data Type	Download all or Query/Filter
Images and Segmentations (DICOM, 14.86 GB)	 

Click the Versions tab for more info about data releases.

### Detailed Description

## Detailed Description

Collection Statistics	
Modalities	MR, SEG, SR
Number of Participants	15
Number of Studies	30
Number of Series	270
Number of Images	38,500

Image Size (GB)	14.86
-----------------	-------

**Note:** in the article at doi: [10.1097/RLI.0000000000000382](https://doi.org/10.1097/RLI.0000000000000382), “Subject 1” is associated with “PCAMPMRI-00001” in TCIA.

### Citations & Data Usage Policy

## Citations & Data Usage Policy

This is a **limited access** data set. Upon receiving access you may only use it for the purposes outlined in your request to the data provider. You are not allowed to redistribute the data or use it for other purposes. See TCIA's [Data Usage Policies and Restrictions](#) for additional details. Questions may be directed to [help@cancerimagingarchive.net](mailto:help@cancerimagingarchive.net).

**Please be sure to include the following citations in your work and acknowledge the award that supported collection and sharing of these data sets (U01 CA151261, PI Fiona Fennessy) if you use this data set:**

#### **i** Data Citation

Fedorov, A; Schwier, M; Clunie, D; Herz, C; Pieper, S; Kikinis, R; Tempany, C; Fennessy, F. (2018). Data From QIN-PROSTATE-Repeatability. The Cancer Imaging Archive. DOI: [10.7937/K9/TCIA.2018.MR1CKGND](https://doi.org/10.7937/K9/TCIA.2018.MR1CKGND)

#### **i** Publication Citation

Fedorov A, Vangel MG, Tempany CM, Fennessy FM. Multiparametric Magnetic Resonance Imaging of the Prostate: Repeatability of Volume and Apparent Diffusion Coefficient Quantification. Investigative Radiology. 52, 538–546 (2017). DOI: [10.1097/RLI.0000000000000382](https://doi.org/10.1097/RLI.0000000000000382)

#### **i** Publication Citation

Fedorov, A., Schwier, M., Clunie, D., Herz, C., Pieper, S., Kikinis, R., Tempany, C. & Fennessy, F. An annotated test-retest collection of prostate multiparametric MRI. Scientific Data 5, 180281 (2018). DOI: [10.1038/sdata.2018.281](https://doi.org/10.1038/sdata.2018.281)

#### **i** TCIA Citation

Clark K, Vendt B, Smith K, Freymann J, Kirby J, Koppel P, Moore S, Phillips S, Maffitt D, Pringle M, Tarbox L, Prior F. **The Cancer Imaging Archive (TCIA): Maintaining and Operating a Public Information Repository**, Journal of Digital Imaging, Volume 26, Number 6, December, 2013, pp 1045-1057. DOI: [10.1007/s10278-013-9622-7](https://doi.org/10.1007/s10278-013-9622-7)

## Other Publications Using This Data

- Schwier M, van Griethuysen J, Vangel MG, Pieper S, Peled S, Tempny CM, Aerts HJ, Kikinis R, Fennessy FM, Fedorov A. Repeatability of Multiparametric Prostate MRI Radiomics Features. arXiv [cs.CV] (2018). at <http://arxiv.org/abs/1807.06089>.
- Peled, S., Vangel, M., Kikinis, R., Tempny, C. M., Fennessy, F. M. & Fedorov, A. Selection of Fitting Model and Arterial Input Function for Repeatability in Dynamic Contrast-Enhanced Prostate MRI. Acad. Radiol. (2018). DOI: [10.1016/j.acra.2018.10.018](https://doi.org/10.1016/j.acra.2018.10.018)

TCIA maintains [a list of publications](#) which leverage our data. If you have a publication you'd like to add please [contact the TCIA Helpdesk](#).

### Versions

#### Version 2 (Current): Updated 2019/05/09

Data Type	Download all or Query/Filter
Images (DICOM, 14.86 GB)	<div style="display: flex; justify-content: center; gap: 10px;"> <div style="background-color: #007bff; color: white; padding: 5px 15px; border-radius: 5px; display: flex; align-items: center; gap: 5px;"> <span>↓</span> Download         </div> <div style="background-color: #ffc107; color: white; padding: 5px 15px; border-radius: 5px; display: flex; align-items: center; gap: 5px;"> <span>🔍</span> Search         </div> </div> <p>(Download requires <a href="#">NBIA Data Retriever App</a>)</p>

Added DCE and DWI series

#### Version 1: Updated 2018/02/28

Data Type	Download all or Query/Filter
Images (DICOM, 1.1 GB)	<div style="display: flex; justify-content: center; gap: 10px;"> <div style="background-color: #007bff; color: white; padding: 5px 15px; border-radius: 5px; display: flex; align-items: center; gap: 5px;"> <span>↓</span> Download         </div> </div> <p>(Download requires <a href="#">NBIA Data Retriever App</a>)</p>