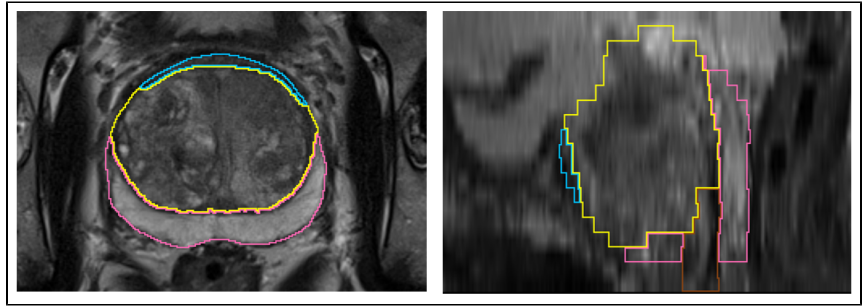


PROSTATEx Zone Segmentations

Summary

This collection contains prostate's zonal segmentation for 98 cases randomly selected from the [SPIE-AAPM-NCI PROSTATEx Challenges](#). The four-class segmentation encompasses the peripheral zone, transition zone, fibromuscular stroma and the distal prostatic urethra. As underlying images, we used transversal T2w scans. Segmentations were created by a medical student with experience in prostate segmentation and an expert urologist who instructed the student and double-checked the segmentations in the end. The DICOM representation of these segmentations were generated with [dcmqi](#).



Acknowledgements

- This work has been funded by the EU and the federal state of Saxony-Anhalt, Germany under grant number ZS/2016/08/80388. We would like to thank the authors of the PROSTATEx challenge for providing this valuable dataset

Data Access

Data Access

Click the **Download** button to save a ".tcia" manifest file to your computer, which you must open with the [NBIA Data Retriever](#).

Data Type	Download all or Query/Filter
Segmentations (DICOM, 143 MB)	Download Search
Corresponding Original MR Images from PROSTATEx (DICOM, 558 MB)	Download

Click the Versions tab for more info about data releases.

Please contact help@cancerimagingarchive.net with any questions regarding usage.

Detailed Description

Detailed Description

Image Statistics	
Modalities	SEG
Number of Patients	98
Number of Studies	98
Number of Series	98
Number of Images	98
Images Size (MB)	143

Note: Please contact help@cancerimagingarchive.net with any questions regarding usage.

Citations & Data Usage Policy

Citations & Data Usage Policy

Users of this data must abide by the [Creative Commons Attribution 3.0 Unported License](#) under which it has been published. Attribution should include references to the following citations:



Data Citation

Meyer, A., Schindeler, D., von Reibnitz, D., Rak, M., Schostak, M., & Hansen, C. (2020). PROSTATEx Zone Segmentations [Data set]. The Cancer Imaging Archive. <https://doi.org/10.7937/TCIA.NBB4-4655>

i **Publication Citation**

A. Meyer, M. Rak, D. Schindele, S. Blaschke, M. Schostak, A. Fedorov, C. Hansen, "Towards Patient-Individual PI-RADS v2 Sector Map: CNN for Automatic Segmentation of Prostatic Zones from T2-Weighted MRI", 2019 IEEE 16th International Symposium on Biomedical Imaging (ISBI 2019), Venice, Italy, 2019, pp. 696-700, <https://doi.org/10.1109/ISBI.2019.8759572>

i **TCIA Citation**

Clark K, Vendt B, Smith K, Freymann J, Kirby J, Koppel P, Moore S, Phillips S, Maffitt D, Pringle M, Tarbox L, Prior F. **The Cancer Imaging Archive (TCIA): Maintaining and Operating a Public Information Repository**, Journal of Digital Imaging, Volume 26, Number 6, December, 2013, pp 1045-1057. DOI: [10.1007/s10278-013-9622-7](https://doi.org/10.1007/s10278-013-9622-7)

Other Publications Using This Data

TCIA maintains [a list of publications](#) which leverage TCIA data. If you have a manuscript you'd like to add please [contact the TCIA Helpdesk](#).

Versions

Version 1 (Current): 2020/11/25

Data Type	Download all or Query/Filter
Segmentations (DICOM, 143 MB)	Download Search
Corresponding Original MR Images from PROSTATEx (DICOM, 558 MB)	Download