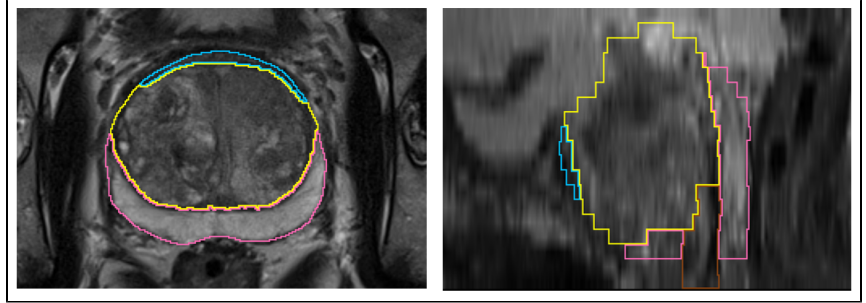


# PROSTATEx Zone Segmentations (PROSTATEx-Seg-Zones)

## Summary

This collection contains prostate's zonal segmentation for 98 cases randomly selected from the [SPIE-AAPM-NCI PROSTATEx Challenges](#). The four-class segmentation encompasses the peripheral zone, transition zone, fibromuscular stroma and the distal prostatic urethra. As underlying images, we used transversal T2w scans. Segmentations were created by a medical student with experience in prostate segmentation and an expert urologist who instructed the student and double-checked the segmentations in the end. The DICOM representation of these segmentations were generated with [dcmqi](#).



## Acknowledgements

- This work has been funded by the EU and the federal state of Saxony-Anhalt, Germany under grant number ZS/2016/08/80388. We would like to thank the authors of the PROSTATEx challenge for providing this valuable dataset

### Data Access

#### Data Access

Click the **Download** button to save a ".tcia" manifest file to your computer, which you must open with the [NBIA Data Retriever](#).

Data Type	Download all or Query/Filter
Segmentations (DICOM, 143 MB)	<a href="#">Download Search</a>
Corresponding Original MR Images from <a href="#">PROSTATEx</a> (DICOM, 558 MB)	<a href="#">Download</a>

Click the Versions tab for more info about data releases.

Please contact [help@cancerimagingarchive.net](mailto:help@cancerimagingarchive.net) with any questions regarding usage.

### Detailed Description

#### Detailed Description

Image Statistics	
Modalities	SEG
Number of Patients	98
Number of Studies	98
Number of Series	98
Number of Images	98
Images Size (MB)	143

**Note:** Please contact [help@cancerimagingarchive.net](mailto:help@cancerimagingarchive.net) with any questions regarding usage.

### Citations & Data Usage Policy

#### Citations & Data Usage Policy

Users of this data must abide by the [Creative Commons Attribution 3.0 Unported License](#) under which it has been published. Attribution should include references to the following citations:



#### Data Citation

Meyer, A., Schindeler, D., von Reibnitz, D., Rak, M., Schostak, M., & Hansen, C. (2020). PROSTATEx Zone Segmentations [Data set]. The Cancer Imaging Archive. <https://doi.org/10.7937/TCIA.NBB4-4655>

**i** **Publication Citation**

A. Meyer, M. Rak, D. Schindele, S. Blaschke, M. Schostak, A. Fedorov, C. Hansen, "Towards Patient-Individual PI-RADS v2 Sector Map: CNN for Automatic Segmentation of Prostatic Zones from T2-Weighted MRI", 2019 IEEE 16th International Symposium on Biomedical Imaging (ISBI 2019), Venice, Italy, 2019, pp. 696-700, <https://doi.org/10.1109/ISBI.2019.8759572>

**i** **TCIA Citation**

Clark K, Vendt B, Smith K, Freymann J, Kirby J, Koppel P, Moore S, Phillips S, Maffitt D, Pringle M, Tarbox L, Prior F. **The Cancer Imaging Archive (TCIA): Maintaining and Operating a Public Information Repository**, Journal of Digital Imaging, Volume 26, Number 6, December, 2013, pp 1045-1057. DOI: [10.1007/s10278-013-9622-7](https://doi.org/10.1007/s10278-013-9622-7)

## Other Publications Using This Data

TCIA maintains [a list of publications](#) which leverage TCIA data. If you have a manuscript you'd like to add please [contact the TCIA Helpdesk](#).

### Versions

**Version 1 (Current): 2020/11/25**

Data Type	Download all or Query/Filter
Segmentations (DICOM, 143 MB)	<a href="#">Download Search</a>
Corresponding Original MR Images from PROSTATEx (DICOM, 558 MB)	<a href="#">Download</a>